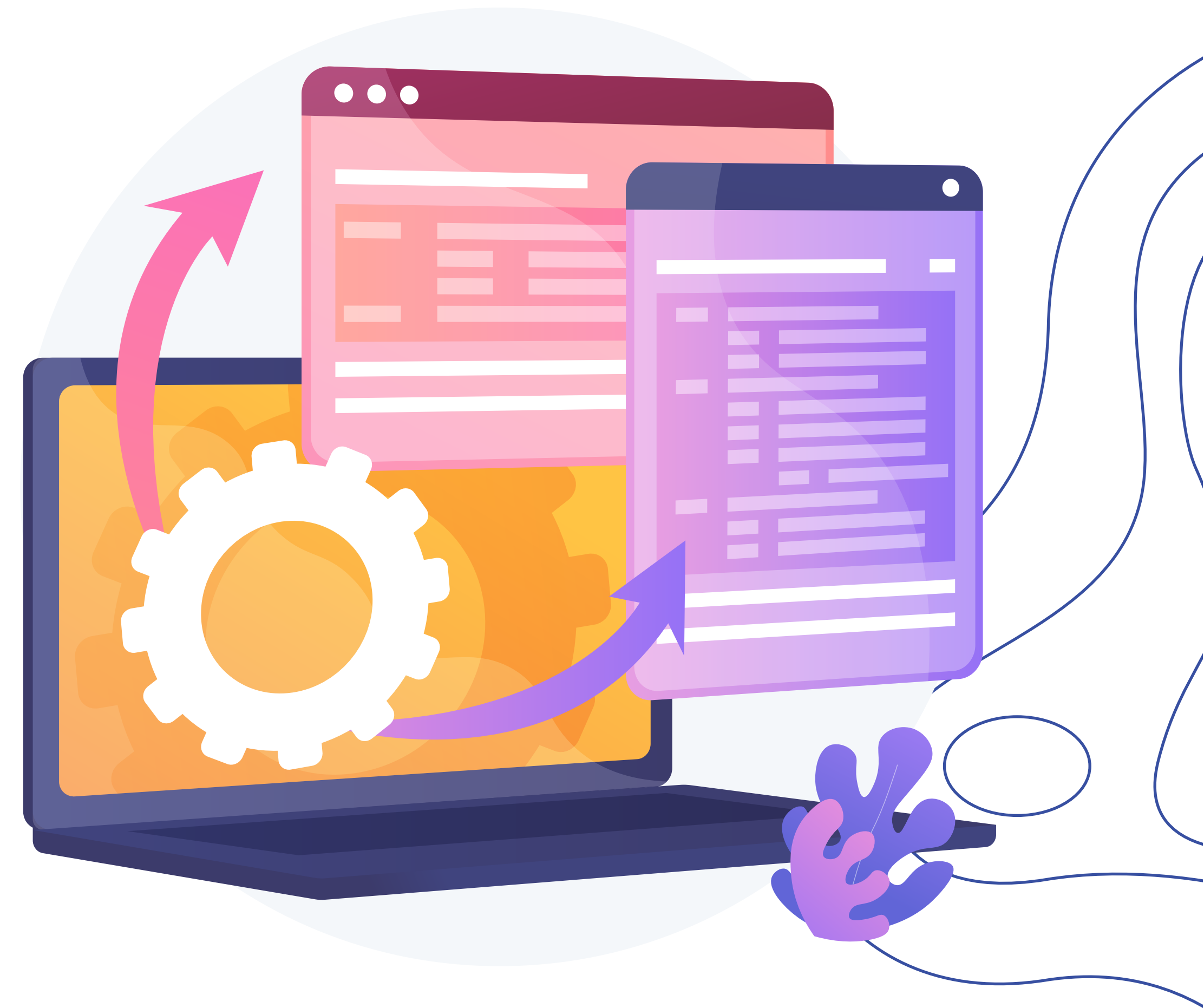


STICH & SEW

TAYLOR SYSTEM

INTRODUCTION

Tailor Management System will allow tailoring shop to automate processes in managing different transactions in their shop. The system is design to automate transactions such as managing customer's information, taking customer orders, checking on the garments measurements, payments and all other transactions that takes place in a tailoring shop.



01

Taylor Inventory Management

- ✓ Adding clothing products in system
- ✓ Importing products through excel
- ✓ Creating QR catalogue for stitch & unstitch garments
- ✓ Adding clothing combo & Variations of garments



Taylor Clothing Manufacturing Module

- ✓ Adding raw clothes into system
- ✓ Adding clothing accessories into system
- ✓ Creating garments using raw material
- ✓ Defining usage quantity & Wastage quantity
- ✓ Adding production stock



Taylor Cashier **Sale Screen**

- ✓ Create B2B and B2C invoices
- ✓ Create bills from Quick Sale method
- ✓ Generate customize orders & order slips
- ✓ Create Drafts & Quotation



Taylor Measurement Screen

- ✓ Adding customers
- ✓ Adding customer's clothing measurements
- ✓ History of customer's measurements



*Taylor User &
Contact
Management*

*Taylor
Purchase
Management*

*Taylor
Accounting
Management*

*Taylor
Expense
Management*

*Taylor Stock
Transfer &
Consumption*

*Taylor
Reports &
Analytics*







BOT Solutions

YOUR PROBLEM OUR SOLUTION

Thank You

PAKISTAN OFFICE

-  +92 342 9558885
-  sales@botsolutions.tech
-  www.botsolutions.tech
-  Office # G-39, Ground floor, Aries tower, near shamsabad metro station, Murree road, Rawalpindi

SAUDIA OFFICE

-  +966 59 068 0274 / +966 54 311 0883
-  sales@botsolutions.tech
-  www.botsolutions.tech
-  office # 20, Floor # 6, Abraaj al basma, Prince majeed road, Jeddah, Saudi Arabia

